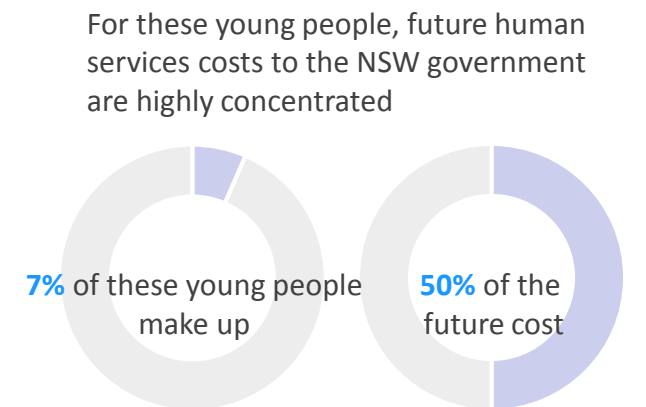
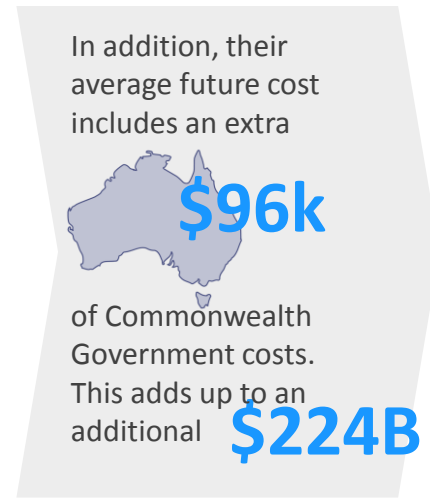
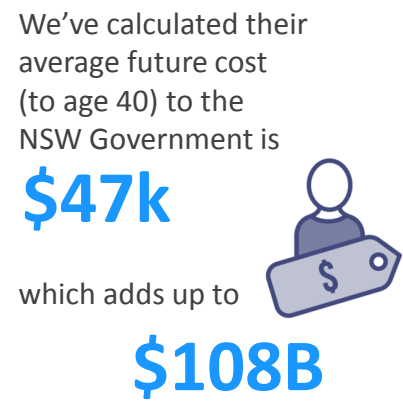


Their Futures Matter – Data Snapshot: Priority Populations

TFM’s Family Investment Model has been developed using individual-level linked administrative data from most government sectors to estimate future service usage and outcomes for young people of NSW



We’ve identified six vulnerable groups from this population

Vulnerable group	Who’s in this group? Children born in NSW, who at 30 June 2017 were...	How many are in this group?	What’s their average cost to the NSW govt?	How many times greater than the NSW under 25 average?	What’s the projected NSW human services costs to age 40?	What’s the difference to their comparison group?	How did we chose these vulnerable groups?
Young mothers and their children	... female aged 21 or younger with at least one child, and the children of these ‘Young mothers’	6,725	\$490k	10.4x	\$3.3B	\$1.8B	➔ Chosen to cover a wide range of vulnerability
Vulnerable young people transitioning to adulthood	... aged between 16 and 18 with any of the following risk factors in the five years prior: ▪ Interactions with the juvenile justice system ▪ Assessment at ROSH ¹	30,065	\$162k	3.4x	\$4.9B	\$3.9B	➔ Chosen with forecast high future cost
Vulnerable young adolescents	... aged between 10 and 14 with any of the following risk factors in the five years prior: ▪ One or more parental risk factors ▪ Interactions with the juvenile justice system ▪ Assessment at ROSH+	72,991	\$153k	3.3x	\$11B	\$7.9B	➔ Chosen to focus on people’s life stages, because needs can vary significantly by life stage
Children and young people affected by mental health aged 18 or younger with any of the following risk factors in the five years prior: ▪ Use of NSW mental health services (hospital or ambulatory) ▪ Parents use of mental health services (hospital or ambulatory)	183,633	\$145k	3.1x	\$27B	\$15B	
Vulnerable young children	... aged 5 or younger with any of the following risk factors: ▪ One on more parental risk factors ▪ Two or more perinatal risk factors ▪ Assessment at ROSH+	160,403	\$119k	2.5x	\$19B	\$11B	
Highest 1,000 cost individuals	... the 1,000 individuals with the highest projected future cost	1,000	\$2.03M	43.2x	\$2.0B	\$1.9B	

Can individuals be in more than one group?

Yes. For example, a ‘Young person with mental health risk factors transitioning to adulthood’ could also be a ‘Vulnerable young person transitioning to adulthood’

What’s meant by comparison group?

These group are randomly selected to have the same number and distribution of individuals by age, gender, Aboriginality and socio-economic status (based on birth location)

¹Person who has been assessed as ROSH, has undergone a SARA or has entered OOH

On the following pages we explore two of the vulnerable groups in more detail

Firstly, we look at the **Vulnerable young children group**

That's children under 5 years at 30 June 2017 with one or more of the following:



- 1 or more parental¹ risk factor
- 2 or more perinatal² risk factors
- Assessment as **ROSH**³

At **160,403** kids, that's about



1 in 4

NSW-born kids under 5

On average, the future cost of these vulnerable young children is

\$119k



Using information collected by government agencies, we have identified, for each vulnerable group, **five indicators** associated with these children having poor outcomes later in life

Indicator	Proportion of group with indicator
Parents have interacted with justice system	29%
Mother smoked during pregnancy	26%
Child had concern report ⁴	24%
Mother aged 21 and under at childbirth	15%
Parents have been in social housing	9%

Then, we split the **Children and young people affected by mental health** into two sub-groups

Children and young adolescents (under 15)

That's children under 15 years at 30 June 2017 with any of the following risk factors in the five years prior:



- Use of NSW mental health services (hospital or ambulatory)
- Parents' use of NSW mental health services (hospital or ambulatory)

At **139,628** kids, that's about



1 in 10

NSW-born kids under 15

On average, the future cost of these vulnerable young children is

\$155k



Indicator	Proportion of group with indicator
Child had concern report ⁴	36%
Mother smoked during pregnancy	28%
Parents have interacted with justice system	27%
Mother aged 21 and under at childbirth	16%
Parents have been in social housing	16%

Young people (15-18)

That's young people between 15 and 18 years at 30 June 2017 with any of the following risk factors in the five years prior:



- Use of NSW mental health services (hospital or ambulatory)
- Parents' use of NSW mental health services (hospital or ambulatory)

At **44,005** kids, that's about



1 in 8

NSW-born kids between 15-18

On average, the future cost of these vulnerable young children is

\$118k



Indicator	Proportion of group with indicator
NAPLAN Year 7 band less than 6	49%
Had concern report ⁴ in last three years	32%
Hospital admission in last three years	30%
Family have been in social housing	23%
Has appeared in court	6%

¹ Risk factors present immediately before and/or after birth. ² Indicators associated with parental domestic violence, mental health, AOD and justice interactions. ³ Person who has been assessed as ROSH, has undergone a SARA or has entered OOHC

⁴ A child and young person concern report relates to the initial contact made at the Child Protection Helpline from mandatory or non-mandatory reporters who have reasonable grounds to suspect a child or young person is at risk of significant harm (ROSH) and has current concerns about the safety, welfare or wellbeing of the child/young person. Child and young person concern reports are then assessed to determine whether the threshold of significant harm is reached

Projected outcomes – vulnerable young children (0-5)

Number (%)	Proportion of Aboriginal people	Future NSW government human services costs to age 40	Proportion expected to have a ROSH report in future	Proportion expected to interact with the justice system	Proportion of males expected to enter custody	Proportion expected to use NSW mental health services	Proportion expected to complete the HSC in NSW	Proportion expected to use social housing as an adult	Proportion of females expected to become a young mother
All children 0-5, excluding vulnerable young children 420,048 (72.4%)	3%	\$37,000	11%	11%	2%	16%	71%	1%	3%
Vulnerable young children, no indicators* 70,716 (12.2%)	4%	1.1x \$40,000	1.2x 14%	1.1x 12%	1.1x 2%	1.2x 18%	1.0x 71%	0.8x 1%	1.0x 3%
One indicator 43,478 (7.5%)	13%	2.2x \$79,000	3.1x 35%	1.7x 19%	2.7x 6%	1.6x 25%	0.8x 55%	2.9x 4%	2.1x 7%
Two indicators 25,229 (4.3%)	28%	4.6x \$170,000	4.6x 52%	2.6x 29%	5.8x 13%	2.2x 35%	0.6x 40%	8.0x 10%	4.1x 13%
Three indicators 14,093 (2.4%)	44%	9.0x \$332,000	6.3x 72%	3.7x 41%	10.7x 24%	3.1x 48%	0.4x 28%	14.1x 18%	7.1x 23%
Four indicators 5,800 (1.0%)	57%	14.3x \$528,000	7.6x 86%	4.8x 54%	16.3x 37%	3.8x 59%	0.3x 20%	19.3x 25%	10.3x 33%
Five indicators 1,087 (0.2%)	70%	19.6x \$722,000	8.2x 93%	5.8x 64%	21.5x 49%	4.4x 68%	0.2x 15%	21.7x 28%	14.1x 45%

* Indicators for this vulnerable group are 1) Parents have interacted with the justice system 2) Mother smoked during pregnancy 3) Child had concern report 4) Mother aged 21 and under at childbirth 5) Parents have been in social housing

Projected outcomes – mental health, children and young adolescents (under 15)

Number (%)	Proportion of Aboriginal people	Future NSW government human services costs to age 40	Proportion expected to have a ROSH report in future	Proportion expected to interact with the justice system	Proportion of males expected to enter custody	Proportion expected to use NSW mental health services	Proportion expected to complete the HSC in NSW	Proportion expected to use social housing as an adult	Proportion of females expected to become a young mother
All children under 15, excluding vulnerable group 1,262,381 (90.0%)	6%	\$45,000	12%	13%	3%	16%	67%	2%	4%
Children under 15, no indicators* 57,227 (4.1%)	4%	0.9x \$40,000	1.2x 14%	1.0x 13%	0.9x 3%	1.6x 25%	1.1x 71%	0.5x 1%	0.8x 3%
One indicator 33,069 (2.4%)	13%	2.1x \$92,000	3.0x 36%	1.8x 22%	2.3x 8%	2.2x 35%	0.8x 55%	2.2x 5%	1.7x 7%
Two indicators 22,446 (1.6%)	27%	4.5x \$200,000	4.4x 54%	2.6x 33%	4.9x 16%	2.7x 43%	0.6x 39%	5.7x 12%	3.4x 14%
Three indicators 16,120 (1.1%)	41%	7.9x \$353,000	5.7x 69%	3.5x 45%	8.2x 27%	3.3x 53%	0.4x 29%	9.4x 20%	5.5x 23%
Four indicators 8,591 (0.6%)	55%	11.9x \$530,000	6.7x 81%	4.4x 56%	11.7x 39%	3.8x 61%	0.3x 21%	12.0x 26%	7.9x 33%
Five indicators 2,175 (0.2%)	66%	15.3x \$684,000	7.2x 87%	5.1x 65%	15.1x 50%	4.2x 68%	0.2x 16%	13.3x 28%	10.6x 44%

* Indicators for this vulnerable group are 1) Child had concern report 2) Mother smoked during pregnancy 3) Parents have interacted with the justice system 4) Mother aged 21 and under at childbirth 5) Parents have been in social housing

Projected outcomes – mental health, young people (15 – 18)

Number (%)	Proportion of Aboriginal people	Future NSW government human services costs to age 40	Proportion expected to have a ROSH report in future	Proportion expected to interact with the justice system	Proportion of males expected to enter custody	Proportion expected to use NSW mental health services	Proportion expected to complete the HSC in NSW	Proportion expected to use social housing as an adult	Proportion of females expected to become a young mother
All children 15-18, excluding vulnerable group 299,587 (87.2%)	6%	\$28,000	2%	11%	3%	10%	64%	2%	4%
Children 15-18, no indicators* 10,905 (3.2%)	6%	0.9x \$25,000	1.1x 2%	1.0x 11%	0.9x 2%	2.3x 23%	1.2x 75%	0.3x 1%	0.9x 3%
One indicator 14,950(4.4%)	11%	1.8x \$51,000	2.9x 5%	1.6x 17%	2.0x 5%	3.3x 32%	0.8x 52%	1.5x 4%	1.7x 6%
Two indicators 10,359 (3.0%)	23%	4.0x \$115,000	7.0x 11%	2.6x 28%	4.9x 13%	4.3x 41%	0.5x 35%	5.0x 12%	3.5x 13%
Three indicators 5,253 (1.5%)	37%	9.1x \$259,000	13.9x 22%	4.4x 47%	11.7x 31%	5.4x 52%	0.4x 23%	10.0x 23%	6.5x 24%
Four indicators 2,070 (0.6%)	56%	19.2x \$548,000	17.4x 28%	6.4x 69%	21.9x 58%	6.5x 63%	0.2x 11%	14.8x 35%	9.3x 34%
Five indicators 468 (0.1%)	67%	34.5x \$983,000	18.3x 30%	8.3x 90%	28.8x 77%	7.6x 73%	0.1x 5%	17.9x 42%	11.8x 43%

* Indicators for this vulnerable group are 1) NAPLAN Year 7 band less than 6 2) Had concern report in last three years 3) Hospital admission in last three years 4) Family have been in social housing 5) Has appeared in court