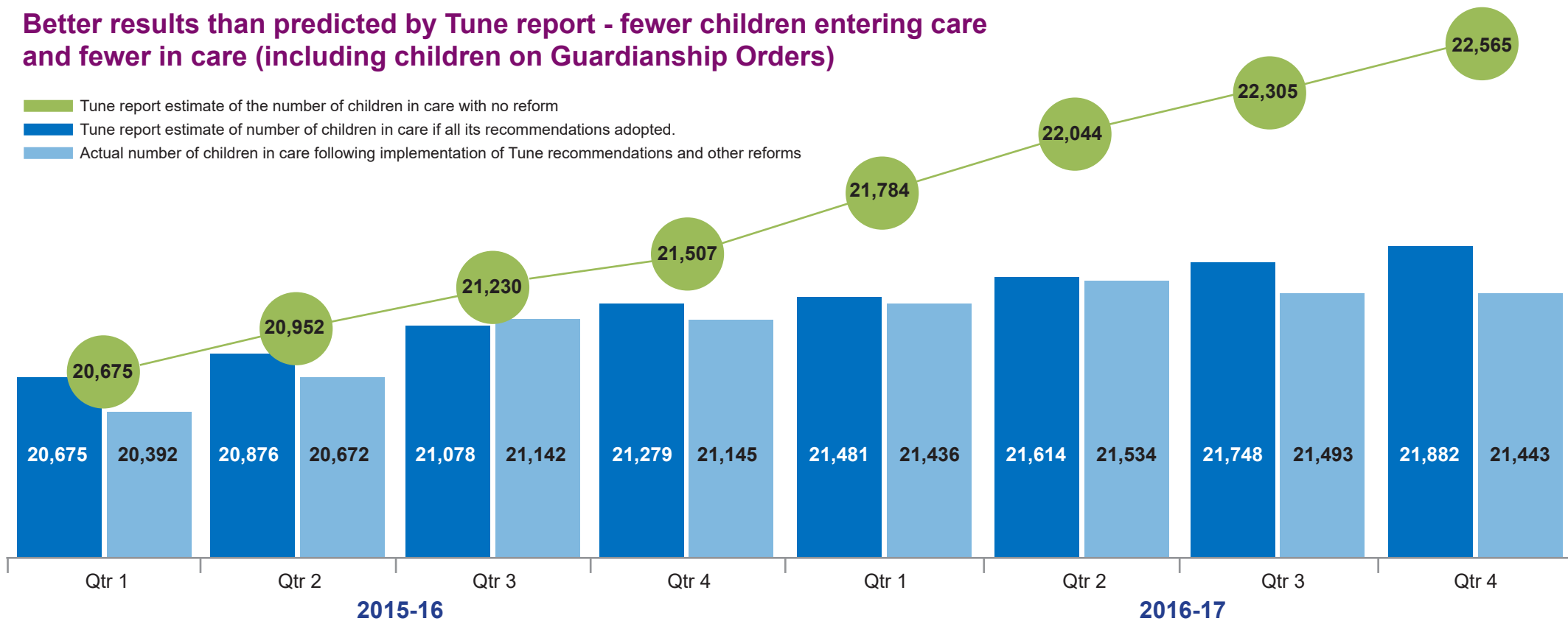


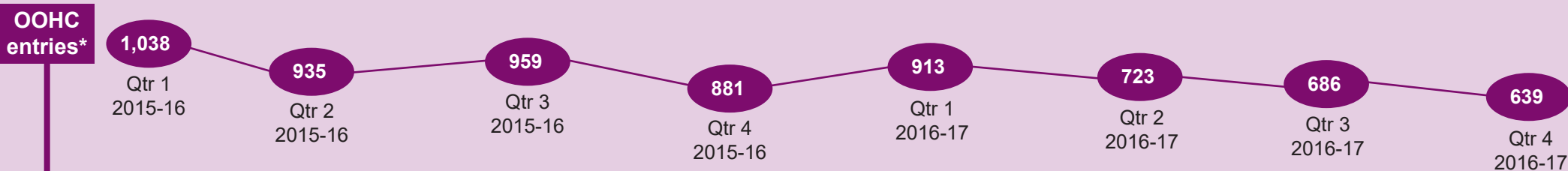
Better results than predicted by Tune report - fewer children entering care and fewer in care (including children on Guardianship Orders)

- Tune report estimate of the number of children in care with no reform
- Tune report estimate of number of children in care if all its recommendations adopted.
- Actual number of children in care following implementation of Tune recommendations and other reforms



439 fewer children in care than predicted by the Tune report

+ At the same time fewer children entered care



*The number of children entering care per quarter cannot be added to derive an annual total as the number of children are unique for each quarter only. Annual data shows the number of unique children entering care in 2016-17 fell by 907 (or 23.7%)- from 3,821 in 2015-16 to 2,914 in 2016-17- the lowest in over a decade.